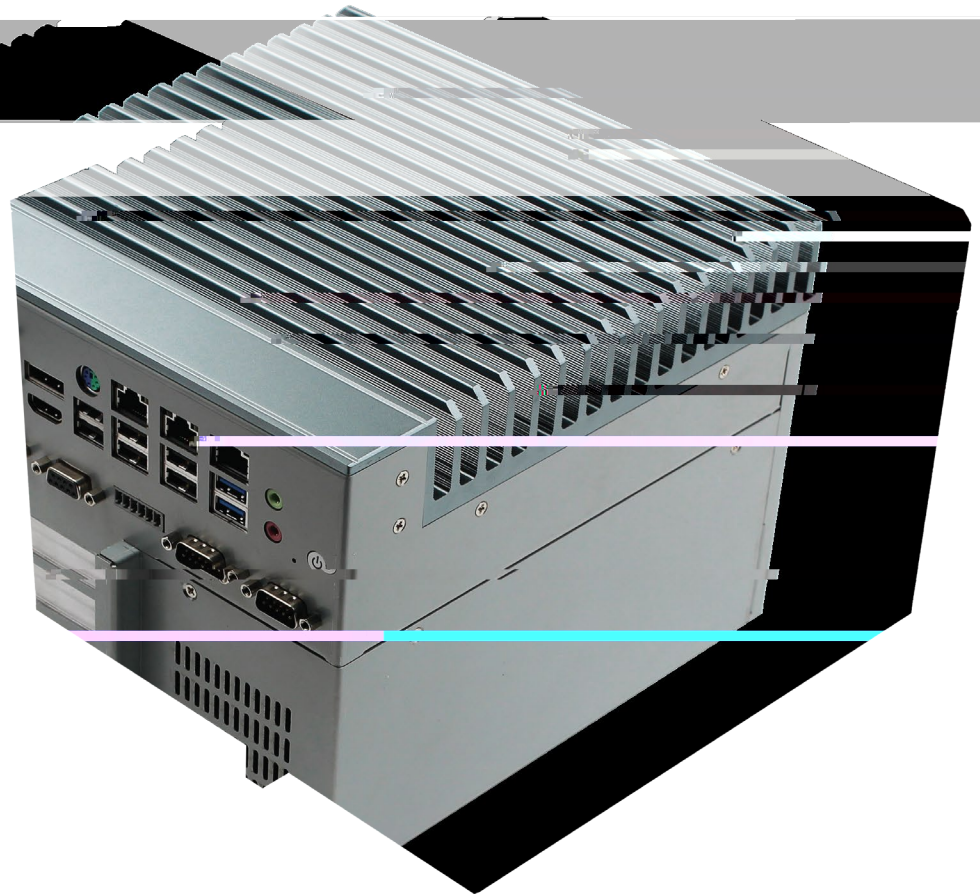


DT-8803H-E4

Intel Haswell Processors with PCH B85 Chipset
based Industrial Machine



Features

- CPU: Intel Haswell CPU + PCH B85
- Memory: Dual Channel DDR3L up to 16GB
- Display via: 1x HDMI+ 1x DP+ 1x VGA
- I/O Interface: 6xUSB2.0+ 2xUSB2.0*header+2xUSB3.2 +
- 1xUSB3.2*Dongle Onboard
- Ethernet: 10/100/1000Mbps
- Storage: 2x 2.5" HD + M.2 SSD
- Expansion: M.2, 4xSlots (PCIe 16X or PCI)
- Power: 16-36V DC-in



IoT Solutions
Alliance
Industrial Solution
Builders Specialist

Maxtang[®]

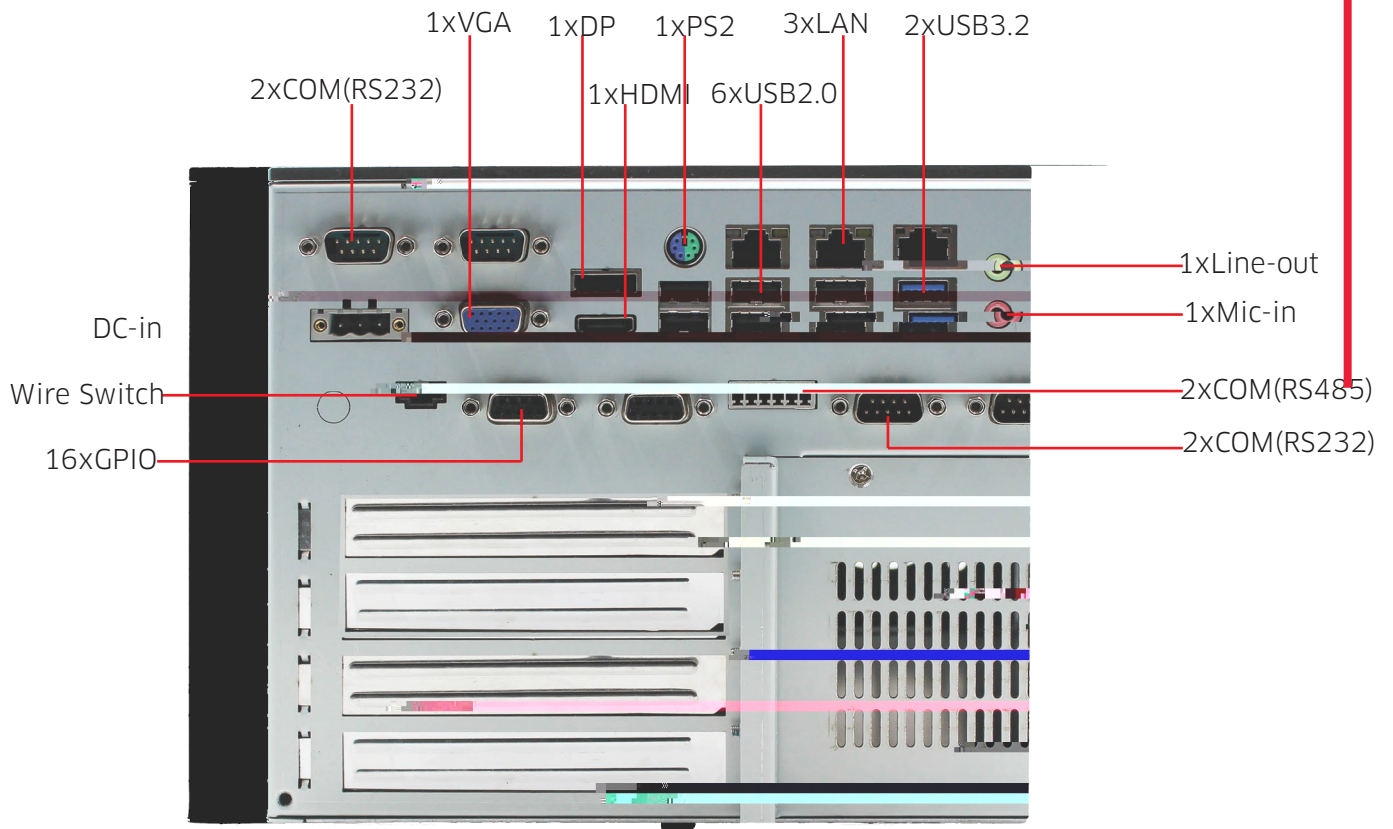
MAXIMIZING YOUR COMPUTING PRODUCTIVITY

Introduction

Maxtang's DT-8803H-E4 fanless embedded industrial PC incorporating the Intel® Core™ Haswell processor, provides a variety of display ports and 16 GPIO, optimizing easy maintenance in industrial automation environments. The series retains the robust design of all Maxtang product lines, at a new extremely cost-effective price point.

The DT-8803H-E4 series supports dual-channel DDR3 memory for more powerful computing performance. Along with a versatile I/O array and flexible expansion capacity, the DT-8803H-E4 Series fully satisfies all the needs of industrial automation with the performance demanded by vision inspection, motion control, and surveillance applications. Fanless construction not only overcomes contaminant and noise challenges presented by harsh IA environments, the elimination of problematic structural elements that negatively affect MTBF greatly increases lifecycle expectations for the platform.

I/O Interfaces

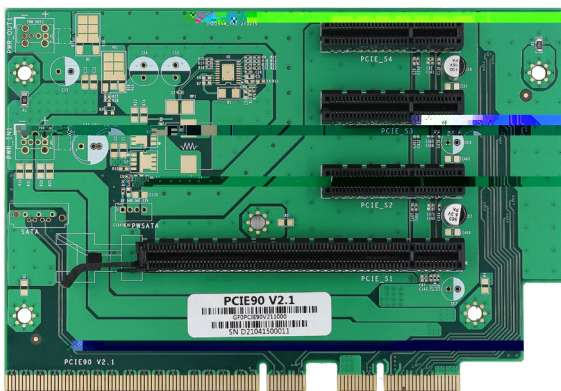


Technical Specifications

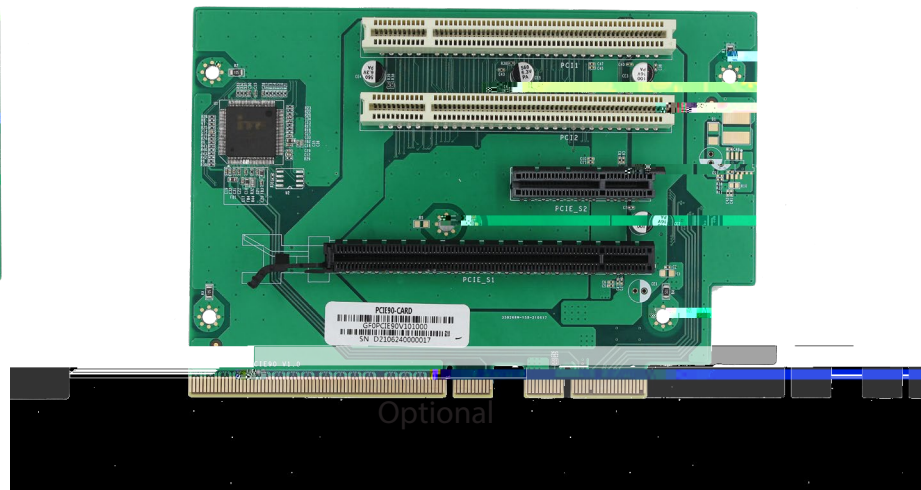
Processor	CPU	B85 Chipset +Haswell CPU (≤ 45W)
Memory	Type	Dual Channel SO-DIMM DDR3L
	Max. Capacity	16GB
Display	GPU	Intel HD Graphics based on CPU
	Port	HDMI + VGA+ DP
Ethernet	Speed	10/100/1000 Mbps
	Controller	Intel i211
Storage	SATA	2x SATA 2.5 inches HD
	M.2	1x M.2 for WiFi
	M.2	1x M.2 for 2280 SSD SATA
	M.2	1x M.2 for 5G/4G
Expansion	PCIe/PCI	4 Slots
	Default	1*PCIe8X+2*PCIe4X+1*PCIe2X
	Optional	1*PCIe16X+1*PCIe2X+2*PCI
I/O	USB	6xUSB2.0+2xUSB2.0*header+2xUSB3.2+1xUSB3.2* Dongle Onboard
	COM	6x COM (4xRS232+2xRS485)
	LAN	3
	HDMI	1
	VGA	1
	DP	1
	Audio	1x Mic-in + 1x Line-out
	PS2	1x PS/2 (for PS/2 Keyboard and Mouse)
	GPIO	16x
	Other	
Dimension	Size	220 mm x 175 mm x 227.5mm
Power	Standard Port	DC-in 16-36V
Temperature	Operating Temp.	0°C to 50°C
	Storage Temp.	-40°C to 85°C
Cooling method		Fanless
Operating System		Windows 7/8.1/10, Linux

* All specifications and photos are subject to change without notice.

PCIe/PCI Expansion Card



Default



Optional

Block Diagram

Copyright © 2018 Maxtang Technology Co. Ltd. All rights reserved. All data is for information purposes only and not guaranteed for legal purposes. Information has been carefully checked and is believed to be accurate however, no responsibility is assumed for inaccuracies. Maxtang and the Maxtang logo and all other trademarks or registered trademarks are the property of their respective owners and are recognized.

SHENZHEN MAXTANG COMPUTER CO. LTD.

6/F, Bldg 3, Honghui Indl Park, Liuxian 2nd Road, Bao'an Dist, Shenzhen, China 518101

Tel.: +86 755 86143003 | Fax: +86 755 86143003 | sales@datangpc.com

www.maxtangpc.com